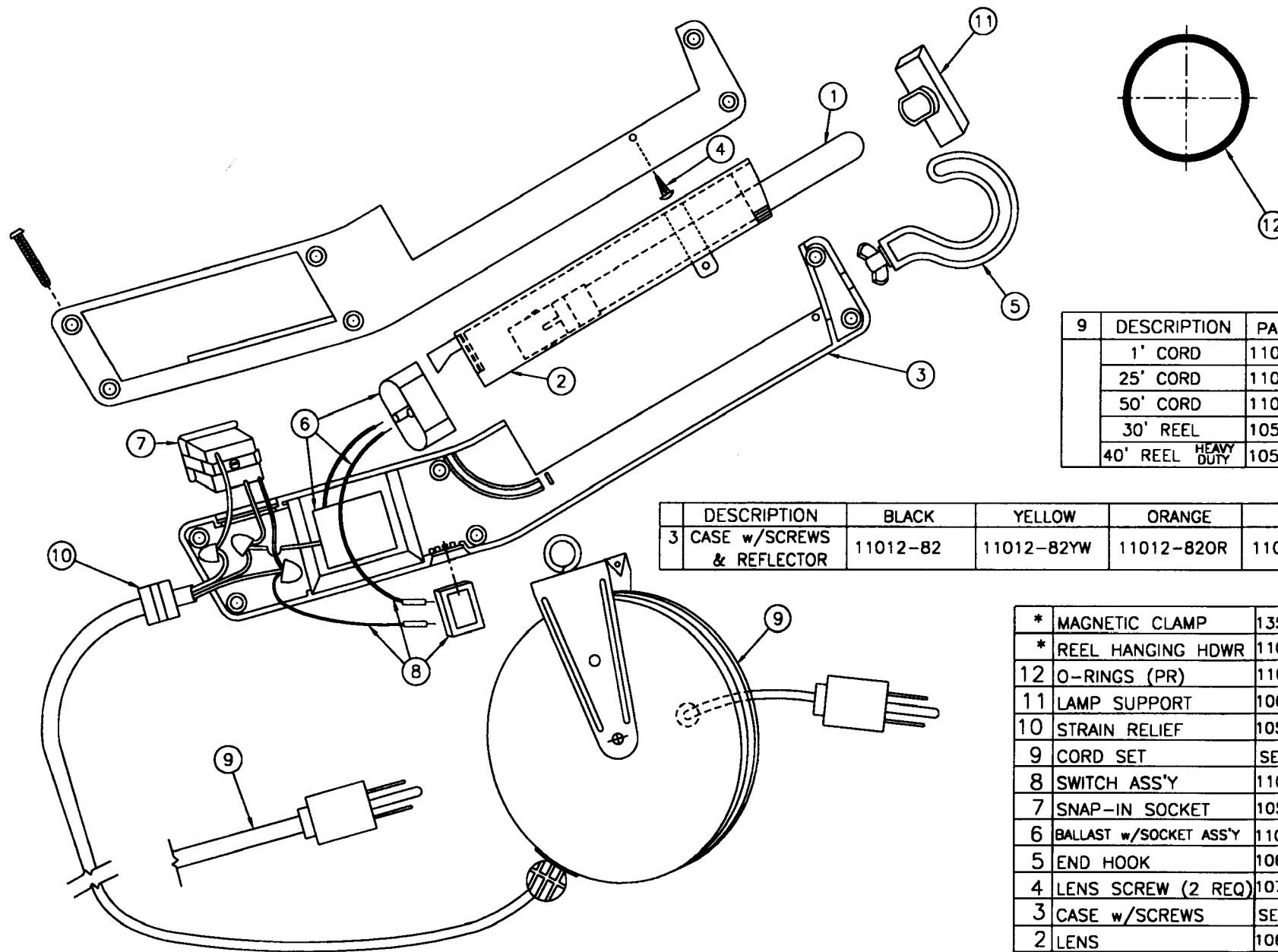


# ANGLE LITE

11012, 11013, 11014, 11015 & 11016



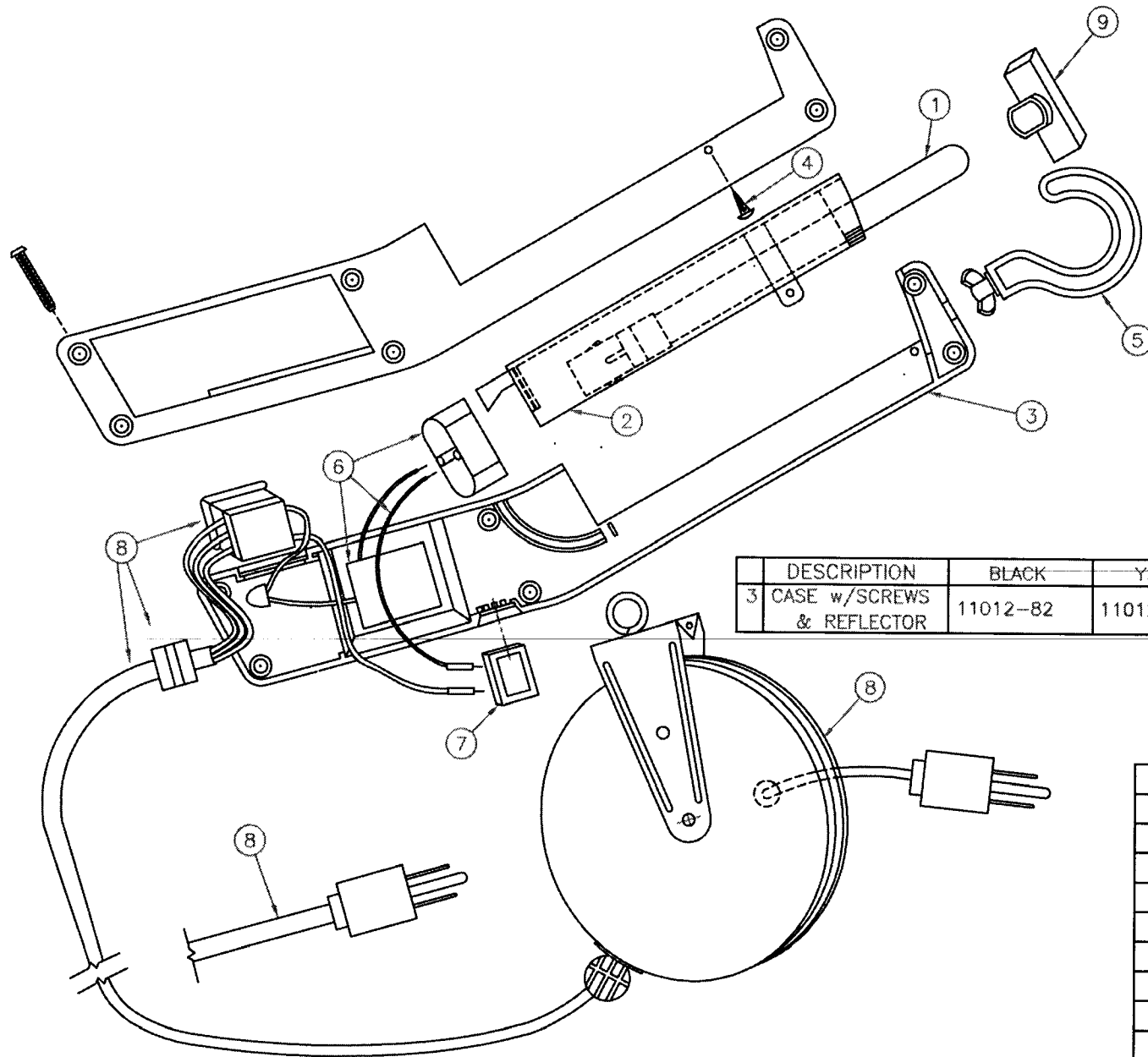
9	DESCRIPTION	PART #
	1' CORD	11012-20
	25' CORD	11013-20
	50' CORD	11014-20
	30' REEL	10520-07-000
	40' REEL <small>HEAVY DUTY</small>	10520-10-000

	DESCRIPTION	BLACK	YELLOW	ORANGE	RED
3	CASE w/SCREWS & REFLECTOR	11012-82	11012-82YW	11012-82OR	11012-82RD

*	MAGNETIC CLAMP	13503-00
*	REEL HANGING HDWR	11004-12
12	O-RINGS (PR)	11013-85
11	LAMP SUPPORT	10621-10-000
10	STRAIN RELIEF	10510-13-000
9	CORD SET	SEE TABLE
8	SWITCH ASS'Y	11012-10
7	SNAP-IN SOCKET	10530-13-000
6	BALLAST w/SOCKET ASS'Y	11012-85
5	END HOOK	10620-93-000
4	LENS SCREW (2 REQ)	10720-02-000
3	CASE w/SCREWS	SEE TABLE
2	LENS	10621-18-000
1	ROUGH SERVICE 13W LAMP	11006-17
	DESCR	CENTRAL #

# ANGLE LITE

11012, 11013, 11014, 11015 & 11016



8	DESCRIPTION	PART #
	1' CORD	11012-20
	25' CORD	11013-20
	50' CORD	62627-20
	30' REEL	61415-20
	40' REEL <small>HEAVY DUTY</small>	11016-20

	DESCRIPTION	BLACK	YELLOW	ORANGE	RED
3	CASE w/SCREWS & REFLECTOR	11012-82	11012-82YW	11012-82OR	11012-82RD

*	MAGNETIC CLAMP	13503-00
*	REEL HANGING HDWR	11004-12
9	LAMP SUPPORT	10621-10-000
8	CORD SET	SEE TABLE
7	SWITCH	10540-15-000
6	BALLAST w/SOCKET ASS'Y	11012-85
5	END HOOK	10620-93-000
4	LENS SCREW (2 REQ)	10720-02-000
3	CASE w/SCREWS	SEE TABLE
2	LENS	10621-18-000
1	ROUGH SERVICE 13W LAMP	11006-17
	DESCR	CENTRAL #