

PRECISION TOOLS FROM



"Your Automotive Measuring People"

**Valve Stem Height
Master Set
No. 6435**

**Small Hole Gage Set
No. 6552**

**Inspect A-Lite
No. 6570**

**Precision Straight Edges
18" - No. 6475
24" - No. 6429
35" - No. 6431**

**Engine Warp &
Alignment Gage
No. 6430**

Write for Catalog

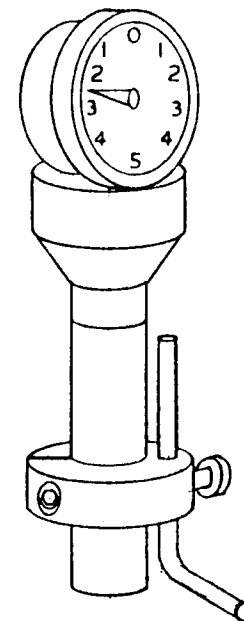
 **Central[®] Tools, Inc.**

**456 Wellington Avenue
Cranston, Rhode Island 02910**

2/96



**PRECISION VALVE SEAT
RUNOUT GAGE
No. 6611, 6612,
6613, 6614**



Check valve seat runout on any automobile, truck, motorcycle, snowmobile or outboard engine with this precision indicator gage.

INSTRUCTIONS FOR USE

1. Insert the pilot into valve guide in head and secure in place.
2. Loosen the probe clamp using 3/16 hex wrench.
3. Place the gage on pilot.
4. Lock probe clamp approximately 1" from face of valve seat.
5. Position the probe to contact the valve seat making sure that the indicator is not at its full travel or .030/.040 after contact with pilot. Tighten probe by turning knurled knob.
6. With your left hand preventing the indicator from turning, rotate gage by turning probe clamp. Adjust the indicator to zero by rotating the bezel. Caution-do not apply downward pressure on gage. Any deflection of probe will give incorrect readings.
7. Rotating gage by the probe clamp, observe indicator readings. Check appropriate specifications to determine if seat runout is acceptable.

Gage Number	Range	Grads.	Reading	*Adaptor Size	For Pilots*	Indicator #	Valve Seat Dia
6611	.100	.0001*	0-.005-0	3/8"	Black & Decker K.O. Lee, Neway, Cicott	4580	3/4
6612	.200*	.0001*	0-50-0	3/8" + .010"	Sloux	4580	to
6613	.200*	.0001*	0-50-0	13/32"	Kwik-Way & Snap-On	4580	2 1/2
6614	.200*	.0001*	0-50-0	7/16"	Kwik-Way	4580	

* Pilot not available from Central

* Interchangeable with 6440 series mfg. after 1-1-96. Consult factory for details.